

# Good Morning Asheville!

@andyg5000

Blue Oak Interactive



# White elePHPant Game Show



- Prizes awarded for each correctly answered question.
- Option to steal others prize or go for What's in the BOX!

# One Deployment Workflow

Drupal 6-8 on ALL hosting providers... Say whaht!?

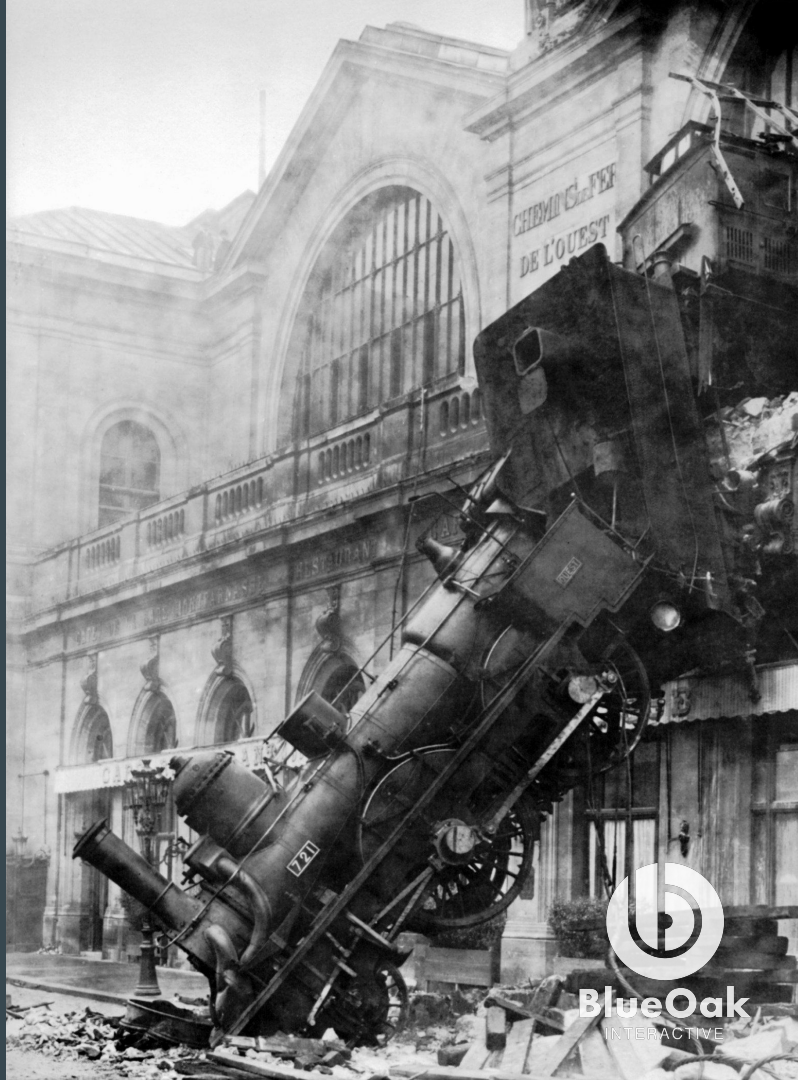
[www.funnyordie.com](http://www.funnyordie.com)



# The Problem

Oh yea, that client requires that you...

- Git push/fetch/merge
- Composer install
- Drush make
- SSH
- FTP
- Drush dl/up
- (Pantheon | Platform | Acquia) Dashboard
- PATCHES! OMFG the patches!



**BlueOak**  
INTERACTIVE

# The Solution:

0.0.1-alpha-omega-charlie-foxtrot

- We know the version is locked in!
- We know the patch applies!
- Our git repo is slim!
- Let's convert every site to use drush make!

**platform.sh** 



# The Problem:

1.x-beta-9 (or final-final.jpg)

- Not every site we maintain is on Platform.sh
- “platform build” becomes a bit bloated
- Without, platform build, drush make requires extra scripts to rebuild a project into the same directory.
- Each hosting provider has their own required workflow to adopt.



# What is Continuous Integration (CI)?

Updating code frequently... with confidence.

# What is Continuous Delivery (CD)?

Pusing code to production frequently... with confidence.





# Our Solution:

1.x-beta9 (forked)

composer + Gitlab CI



# What is Composer?



- A ~~package~~ dependency manager for PHP.
- The standard way to include libraries and dependencies for PHP projects.
- Provides auto-loading to bootstrap your namespaced code.

# Why Learn Composer?



- To build modern PHP applications.
- “Might” be required for Drupal 8 work (Drupal Commerce).
- Utilize non-Drupal libraries to expedite Drupal development?

# Composer.json

```
{
  "name": "blueoakinteractive/boi_ci",
  "description": "Continuous integration scripts for Blue Oak Interactive",
  "require": {
    "symfony/console": "~2.8",
    "symfony/process": "~2.8",
    "symfony/filesystem": "~2.8",
    "symfony/yaml": "~2.8"
  },
  "require-dev": {
    "phpunit/phpunit": "~8.2"
  },
  "autoload": {
    "psr-4": {
      "BOI_CI\\": "src/"
    }
  },
  "bin": [
    "bin/boi_ci"
  ]
}
```

**Project dependencies**

**Project dependencies for development**

# What is Gitlab?



- Gitlab is a git repository service just like Github
- Issues, code review, wiki, container registry, and more!

# Why Gitlab?



- Unlimited free private repositories
- Built in Continuous Integration/Delivery services
- Unlimited free private repositories

# .gitlab-ci.yml

```
image: blueoakinteractive/drupal-php:5.6.18

before_script:
  # Setup the Pantheon private key for pushing code.
  - 'which ssh-agent || ( apt-get update -y && apt-get install openssh-client -y )'
  - eval $(ssh-agent -s)
  - ssh-add <(echo "$DEPLOY_KEY")
  - mkdir -p ~/.ssh
  - '[[ -f /.dockerenv ]] && echo -e "Host *\n\tStrictHostKeyChecking no\n\n" > ~/.ssh/config'

  # Install composer
  - curl -sS https://getcomposer.org/installer | php

  - mv composer.phar /usr/local/bin/composer

  # Require prestissimo to speed up builds.
  - composer global require "hirak/prestissimo:^3"

  # Install all project dependencies
  - composer install --prefer-dist --no-interaction --no-progress

  # Build the site.
build_job:
  only:
    - master
  script:
    - rsync -vrq -e 'ssh -p 49152' $CI_PROJECT_DIR/ blueoakinteractive@pan.clients.blueoakint
```

**Do stuff...**

**push it real good**



# Oh yeaaaaah!

- One command to build sites!
- Gitlab CI pushing to production!



+



CI =



**BlueOak**  
INTERACTIVE

# The Problem:

## 2.0-beta-o-yea-rc1



- Too much bash!
- Config copy and paste hell
- Inability to keep configs updated

# BOI CI

- Identical Gitlab CI configs
- Local development setup included
- Project-wide build steps (npm install)
- Env specific build steps (gulp sass)
- Artifact repos for deployment
- Site setup for testing in CI environment



# Demo

# Resources

- BOI CI: [https://gitlab.com/blueoakinteractive/boi\\_ci](https://gitlab.com/blueoakinteractive/boi_ci)
- BOI CI Examples: [https://gitlab.com/blueoakinteractive/boi\\_ci\\_examples](https://gitlab.com/blueoakinteractive/boi_ci_examples)
- Composer Scripts: <https://getcomposer.org/doc/articles/scripts.md>
- Gitlab CI: <https://about.gitlab.com/features/gitlab-ci-cd/>

# Questions

# Sources

## Multimedia

- Seth: <https://www.youtube.com/watch?v=RfHOTILc5dQ>
- Downtown Asheville image: <http://bitcookie.com/>
- Train wreck image: [https://en.wikipedia.org/wiki/Train\\_wreck](https://en.wikipedia.org/wiki/Train_wreck)
- Stuart Smalley:  
[http://assets.nydailynews.com/polopoly\\_fs/1.2109949.1444577365!/img/httpImage/image.jpg\\_gen/derivatives/gallery\\_1200/stuart-smalley.jpg](http://assets.nydailynews.com/polopoly_fs/1.2109949.1444577365!/img/httpImage/image.jpg_gen/derivatives/gallery_1200/stuart-smalley.jpg)
- Danny MacAskill: <https://ep1.pinkbike.org/p4pb11480264/p4pb11480264.jpg>
- PHP Elephant:  
<http://afieldguidetoelephpants.net/photos/white-globalis-1-400x300.jpg>



# Thank You